



Creating Charley

What you'll need:

Scissors to cut the pieces out.

An **exacto or razor knife** to cut the slots for inserting the mane and tail.

Strong, fast-drying **glue**. A glue gun would work well if you're able to use one. *(I used an Extreme Elmer's glue stick and the Scotch Tacky Glue pictured here.)*

Tape - I used scotch tape on the insides to help hold things together as the glue dried.

A helper - It's difficult to bend/fold, glue, and hold everything together all at once. If you have someone to assist you, things will likely go more smoothly.

Wipes/paper towels - I kept getting glue all over my fingers as I worked on putting this together. Maybe you're neater than I am, but I found myself frequently wiping glue off my fingers.



You'd think after having assembled three other models, I'd have this figured out. I thought Charley was going to be the easiest, but I think he was the hardest for me. But, I made several mistakes that made it more challenging. If you read all the instructions, maybe I can save you some trouble.

Creating Charley

Cut each part out along the light blue lines. When cutting, if you'll cut off an identifying letter, first jot that letter on the opposite side of Charley at a position that will be inside the piece when cut. The letters help identify the alignment of pieces.

The **dashed lines are fold lines.** Do not cut those. Also, do not cut where the colored lines cross the top of the legs. Your cut pieces should look like the ones below.

** When cutting the two front legs (shown in the lower right corner in the photo), **do NOT cut up inside the hoof area.** Cut along the bottom blue line only. You'll have two small, white triangles on each leg. Cutting into those was my first mistake. If you do make that mistake, just use small pieces of tape to hold it together. Note also that there's a very small tab between the rectangle and the upper flap of the leg. Try to keep that if you can, it will help when gluing. But if you accidentally cut it off, it's not a big deal.

Cut all the parts out and group like pieces together (legs, body, etc.) store everything in a plastic bag if you'll assemble the pieces at another time.



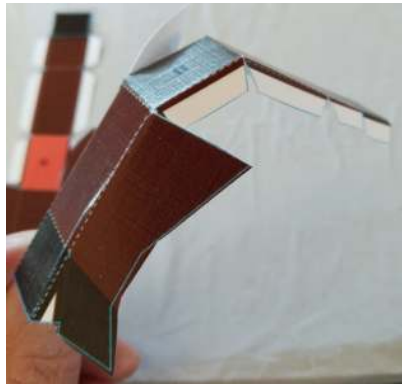
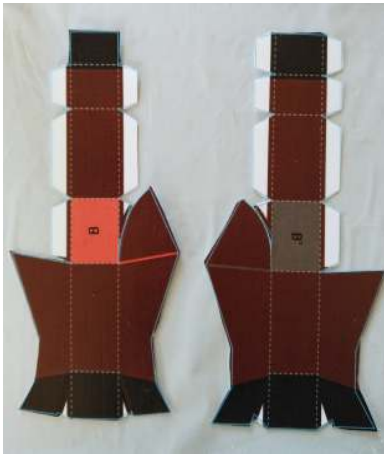
Construction strategy:

- Assemble all four legs
- Assemble the body
- Assemble the head
- Attach the head to the body
- Attach the legs to the body

Tail

Glue the tail pieces together to insert later. **Leave the tail's insertion tab unglued** so it can be separated and folded outward when you insert the tail later.

Creating Charley



Step 1: Legs

First, the easy part - the two front legs, B and B'. (photos above)

These legs are all one piece. Simply fold the center part down. It becomes the interior part of the leg. Fold the two sides in, aligning the colored rectangle with the horizontal colored line on the leg, and glue together.



Back Left Leg, A'

This one is almost as easy as the two fronts. It comes in two pieces. Fold down the side pieces and the leg, then glue to that attached leg.

I apply the glue first, but some tape helps hold the tabs down on the interior of the leg. Since it's on the inside, the tape won't be seen once the leg is fully assembled.



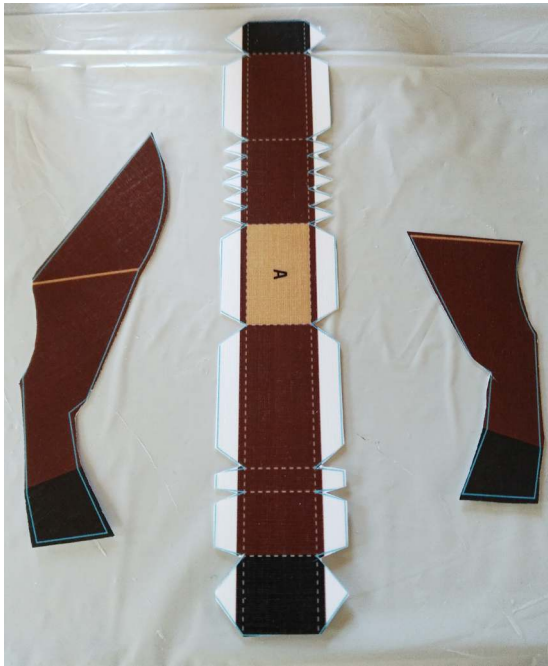
Remember the colored block will be visible across the top of the leg. Later the legs will be attached to the matching color block on the body.

Last of all, attach the separate side piece to the interior leg structure.



I use a lot of glue. It shows as white in some of the photos, but when dry, it's clear and not noticeable.

Creating Charley



Back Right Leg, A

This last leg has three parts. Fold down the interior piece. I glue it to the side piece that has the curved flap first, let that dry, then attach the other side piece. Remember the colored rectangle will be at the top of the leg, aligned horizontally with the colored line on the outside of the leg.

The four legs should look something like this when finished.

Set the legs aside for now. Next, we'll work on Charley's body.



Creating Charley

Step 2: the Body

This is where I started really going astray. I was so excited to put Charley's head together, that I did that and actually attached it to the side, before assembling the body. That made everything from there on much harder than it needed to be.

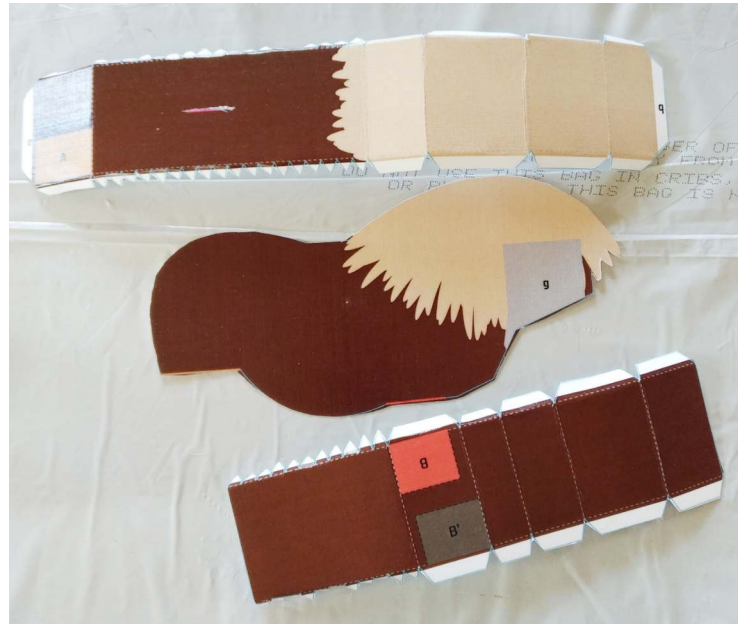
If, like me, you really want to do his head next—go ahead (Step 3), just **don't attach it to the body yet!**

Two pieces form the interior of the body. That made it more challenging as well. The longer pieces are hard to wrap around and to try to get to stay in place as you're gluing.

Which piece to start with? I think I made the wrong choice here as well. I started with the B/B', shorter piece.

If/when I do it again, I'll **start with the top piece that contains his mane**. Make sure you've cut out the slot for his tail, but insert the tail only after this piece is glued to one side and dry.

Line the A rectangle on that piece with the light tan line behind his belly. Curve it up around his hindquarters, then over his back and mane. Use some tape to get the inside tabs to stay in place. If you're having trouble with it, just glue part of it at a time, like glue the part around his hindquarters, then wait for that to dry before gluing the rest.



Once the top piece is dry, insert the tail. If you left the tail tab part unglued, after inserting it in the slot, fold each tab out to opposite sides and tape them. This will hold the tail securely in place.

Next, attach piece B/B' to the body. The red rectangle aligns with the red line toward the front of the body. The shorter end connects to the 'a' tab on the piece you added previously.

The opposite end wraps up around his neck and connects to the 'b' tab on the interior mane piece.

If you managed this step, congratulations! This was the hardest part for me because I did it in probably the worst possible way.

The woman who created the models, provided no instructions, so putting them together was a trial and error process for me. :)



This photo shows both sides attached - but with the head that I shouldn't have done so early!

Creating Charley

Step 3: Assemble the Head

The head is very easy to assemble, just fold all the tabs down, then fold the four sides down. Do that before gluing, so you can see how it all fits together, then glue all the tabs to make a self-contained Charley head.



Step 4: Attach the Head

Once it's dry, attach the back of the head to the gray 'g' area on one of Charley's sides.

Step 5: Attach Legs to Body

Match the colors and letters to the rectangles on the bottom of the body.

Apply glue to the outside flaps as well as to the color blocks on either the top of the leg or bottom of her body.

Make sure the legs don't angle too much inward. A wider stance will make Charley more stable.

I like to turn the models upside down until the legs are fully dried.

If it turns out that he's a little lopsided and unsteady on his feet (mine was), put on your farrier cap and trim his hooves a bit with some scissors to make him more balanced.

Charley can't wait to join the rest of your herd!



Why are you doing this to me? I promise I'll be good if you just let me out of here!



If you hadn't kept me upside down, I wouldn't look so googly-eyed!