



## Creating Zach

### What you'll need:

**Scissors** to cut the pieces out.

An **exacto or razor knife** to cut the slots for inserting the mane and tail.

Strong, fast-drying **glue**. A glue gun would work well if you're able to use one. *(I used an Extreme Elmer's glue stick and the Scotch Tacky Glue pictured here.)*

**Tape** - I used scotch tape on the insides to help hold things together as the glue dried.

**A helper** - It's difficult to bend/fold, glue, and hold everything together all at once. If you have someone to assist you, things will likely go more smoothly.

**Wipes/paper towels** - I kept getting glue all over my fingers as I worked on putting this together. Maybe you're neater than I am, but I found myself frequently wiping glue off my fingers.



sonrisestable.com

Of all five Sonrise Stable horse models, this one went together the easiest for me. Perhaps it's because Zach was the last one I assembled. This is Carrie's horse. I hope you enjoy working on this model.

# Creating Zach

**Cut each part out along the light blue lines.** When cutting, if you'll cut off an identifying letter, first jot that letter on the opposite side of Zach at a position that will be inside the piece when cut. The letters help identify the alignment of pieces.

The **dashed lines are fold lines.** Do not cut those. Also, do not cut or fold where the colored lines cross the top of the legs. Your cut pieces should look like the ones below.

\*\* When cutting the B' leg, **do NOT cut up inside the hoof area.** Cut along the bottom blue line only. You'll have a small, white triangle between the two hoof parts and the tab on the left. If you accidentally cut that out, just use a small piece of tape to hold it together.

Cut all the parts out and group like pieces together (legs, body, etc.) store everything in a plastic bag if you'll assemble the pieces at another time.



## Construction strategy:

- Assemble all four legs
- Assemble the body
- Attach the legs to the body

## Tail

Glue the tail pieces together to insert later. **Leave the tail's insertion tab unglued** so it can be separated and folded outward when you insert the tail later.

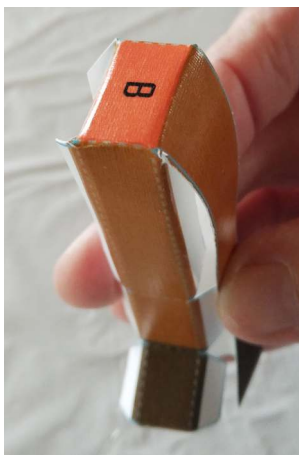
# Creating Zach

## Step 1: Legs

The legs with white on the feet are back legs. The darker ones are fronts.

The B and A' legs are constructed the same way. There are two pieces to each leg.

Fold the two sides and the attached part of the leg down to form three sides of the leg.



Glue the tabs to the side.

When dry, glue the remaining side of the leg, aligning the colored line with the colored block at the top of the leg. Both legs are shown finished (right photo)



Remember the colored block will be visible across the top of the leg. Later the legs will be attached to the matching color block on the body.

## Front Left Leg, B'

This one is also a two-piece leg and works much the same way. Fold down the colored rectangle and segmented leg, then fold the leg with the slanted hoof sideways. Glue to that attached leg.

Last of all, attach the separate side piece to the interior leg structure.



# Creating Zach

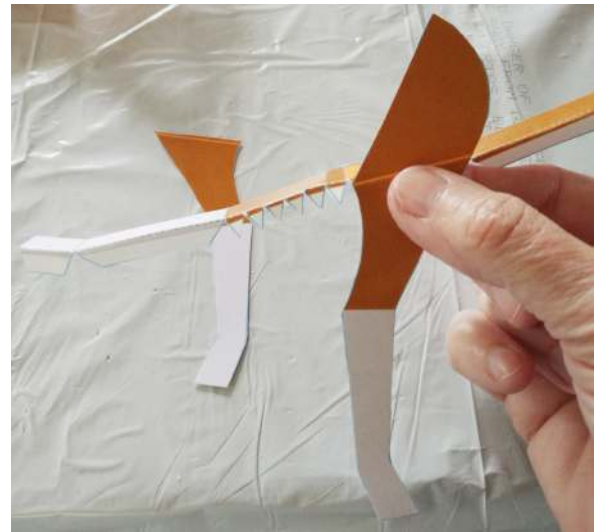


This last leg has three parts.

Fold down the interior piece. I glue it to the side piece that has the curved flap first, let that dry, then attach the other side piece.

Align horizontally with the colored line on the outside of the leg. The triangular tabs go along the curve of the leg.

**Back Right Leg, A**



## Step 2: the Body

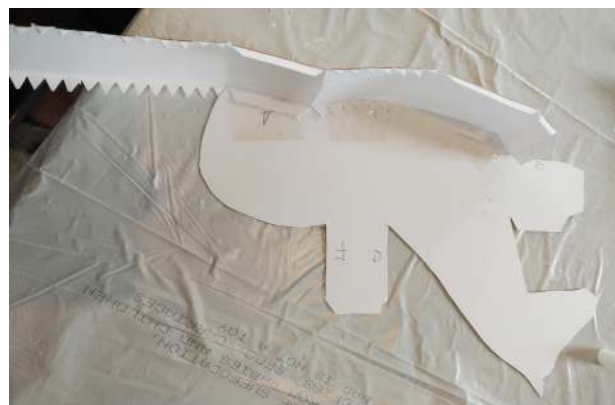
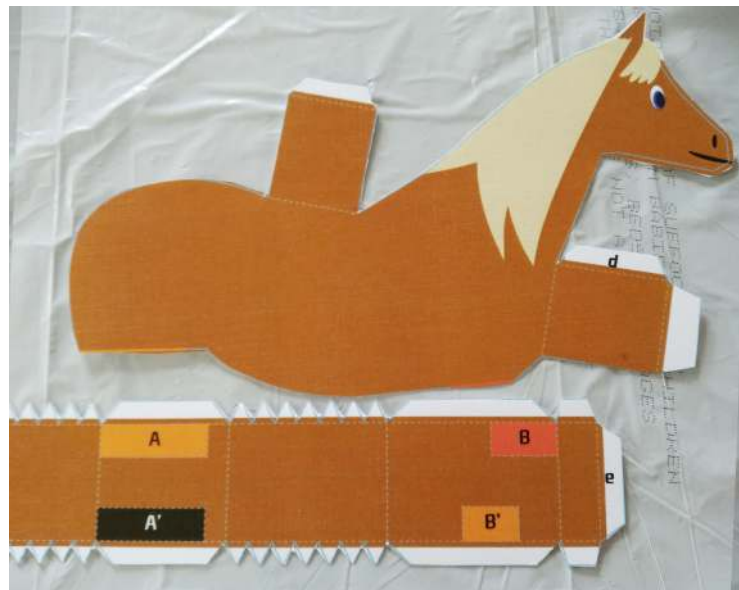
Two pieces form the interior of the body. The tabs on the body make attaching and aligning these pieces easier.

Begin with the two pieces shown to the right. I've positioned the rectangular piece to show roughly how it aligns. The orange A block aligns with the orange line at the hindquarters, and the B red block aligns with the red line at the front of the body.

The area between those two needs to curve around the belly.

Make sure you've cut out the tail slot in this piece. You can attach the tail before or after adding this strip to the body.

The 'a' tab on the interior strip attaches to the bottom of that body flap at the chest area. I began by gluing only that much, rather than trying to glue the entire strip at once. I used tape to hold this in place, also.



# Creating Zach

It's a little hard to see in the photo (right) but I inserted the tail into the tail slot at this point, splitting out the flaps to the sides and gluing/taping them in place.

Once you have that much of the strip solid, the other end wraps around the hindquarters and attaches to the top body strap at the 'f' end.

Next, attach the other interior body piece, attaching the 'c' end to the 'c' end of the body flap.

The piece then wraps up the neck, around the head, and attaches at the 'd' tab on the chest body flap.



The interior piece doesn't go around the tips of the ears.

Make sure it fits around the muzzle and reaches the 'd' tab, that will allow you to adjust where it fits between Zach's ears.

# Creating Zach

The last step on the body is to glue the opposite side on. It can be a bit of a challenge to get all the edges aligned. Just do the best you can. Mine didn't align perfectly. :)



## Step 3: Attach Legs to Body

Match the colors and letters to the rectangles on the bottom of the body.

Apply glue to the outside flaps as well as to the color blocks on either the top of the leg or bottom of her body.

Make sure the legs don't angle too much inward. A wider stance will make Zach stronger and more stable.

I like to turn the models upside down until the legs are fully dried.

If it turns out that he's a little lopsided and unsteady on his feet (mine was), put on your farrier cap and trim his hooves a bit with some scissors to make him more balanced.



*Aagghh! Charley warned me about this part!*



*Free at last!  
Where are all my friends?*